

Northeast Michigan Great Lakes Stewardship Initiative



Expanding Classrooms. Strengthening Communities.

Winter 2016

Visit our website

The NEMIGLSI website serves to regionally connect and communicate among partners, projects, and professional development opportunities.



www.nemiglsi.org

FIND us online.



WATCH OUR PBE DOCUMENTARY!

See us in The Guide



Have you seen recent NEMIGLSI features in The Guide? A great opportunity to showcase our programs and projects, this regional free publication proudly promotes the education and conservation of our Great Lakes and natural resources. Be sure to pick up the next copy!

NEMIGLSI Endowment

Please consider donating to our endowment through the Community Foundation for Northeast Michigan to support continued place-based education. Simply visit our homepage and click the "Donate Here" button to help this established network sustain valuable school-community relationships through student learning.



What's the value in your investment with NEMIGLSI? - [Click Here](#)

B-WET: Our Rivers, Our Future

The NOAA Great Lakes B-WET Program ended its final year of funding in the 2014-2015 school year. *Our Rivers, Our Future* engaged over 20 schools across northeast Michigan in watershed studies and stewardship projects. To learn more about the B-WET program and see a short video of students in action [CLICK HERE](#).



Extra! Read all about it!

Want to read more? You can always find the most current events on our website and explore student successes with the "In The News" section. There you will find published articles from area newspapers and online media featuring the many amazing projects of students.

Look twice, you or a project you're showing in may just be the star of the show!

Great Lakes Fisheries!



Did you know classrooms across northeast Michigan connect to our Great Lakes fisheries through place-based education? Check out the amazing projects where students learn about life cycles while raising Lake Sturgeon, Chinook Salmon, and Lake Trout.

To Learn More, [Click Here!](#)



Join us this February!

2016 NEMIGLSI Regional Networking Meeting



INTEGRATED LEARNING THROUGH PLACE-BASED EDUCATION

When: Tuesday, February 16th, 9:00am - 3:00pm
Where: NOAA Great Lakes Marine Heritage Center
 500 West Fletcher Street, Alpena
Who: School Administrators, Teachers and Community Partners
RSVP: By February 12th - [Click Here](#)

Reasons To Attend This Year's Regional Networking Meeting:

- Gain educational updates, information and resources;
- Network and share lessons with educators and community partners;
- Contribute in planning the future direction of the NEMIGLSI network.

Welcome Dani Fegan!

Hello! My name is **Dani Fegan**, and I am just beginning my term as a Huron Pines AmeriCorps member. I am excited to be serving with the Northeast Michigan Great Lakes Stewardship Initiative (NEMIGLSI) as education coordinator over the next year. Originally from the Upper Peninsula, I am glad to be back in northern Michigan after completing my undergraduate work at Hope College in Holland, MI (2011, Biology) and more recently finishing up my Master's degree at Michigan State University (MSU) with a dual degree in Plant Biology and Ecology, Evolutionary Biology, and Behavior. As a graduate student at MSU, I worked with K-12 educators in southwestern Michigan to bring cutting-edge, hands-on science activities into local classrooms and schoolyards. Serving out of the Thunder Bay National Marine Sanctuary, I hope to collaborate with educators—both formal and informal—to bring place-based education opportunities to NE MI and strengthen those already in place! I'm excited to get my hands dirty alongside the next generation of environmental stewards here in beautiful northern Michigan.

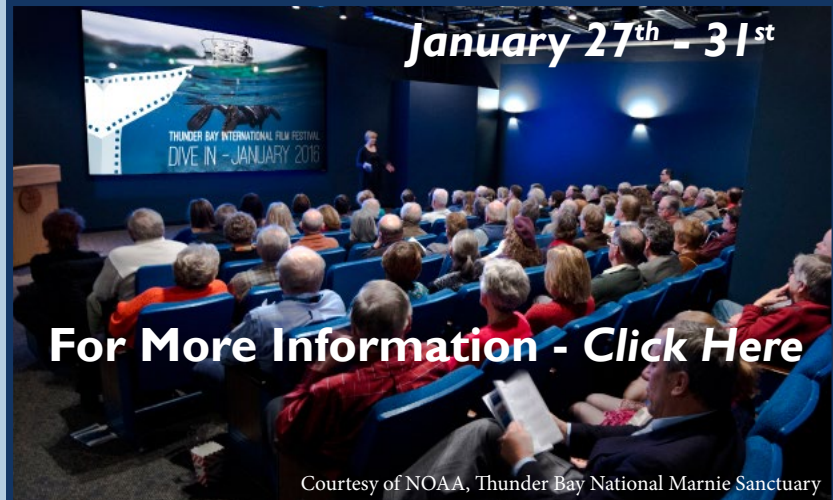


Huron Pines AmeriCorps is a program of Huron Pines and is supported in part by the Corporation for National and Community Service, Michigan Community Service Commission, Huron Pines and contributions from host sites. With a living stipend and benefits, this 10-month commitment provides a pathway to employment in the conservation community. AmeriCorps members focus on volunteer engagement, habitat restoration, environmental stewardship and developing new conservation services.

Thunder Bay International Film Festival

GREAT LAKES, GREAT FILMS.

The Friends of Thunder Bay National Marine Sanctuary are bringing the world of cinema to northeast Michigan! From January 27th through the 31st, join Michigan movie fans for the Thunder Bay International Film Festival. In partnership with the San Francisco International Ocean Film Festival, this unique festival showcases some of the most impressive ocean- and Great Lakes-inspired films from around the world.



For More Information - [Click Here](#)

Check out the short film finalists for this year's Student Film Competition. In the films, students address what #WaterIs to them. Support these students and their passion for film and the environment by attending this FREE event. **January 31st | 11:00 AM-1:00 PM | GLMHC's Theater**



Professional Development: Opportunities Abound SAVE THE DATES

4-H E-Academy

The Role of Learning in Positive Youth Development

March 30th - April 27th (Free Webinar)



Water Quality Training for Community Partners

April 21st (Alpena, Michigan)

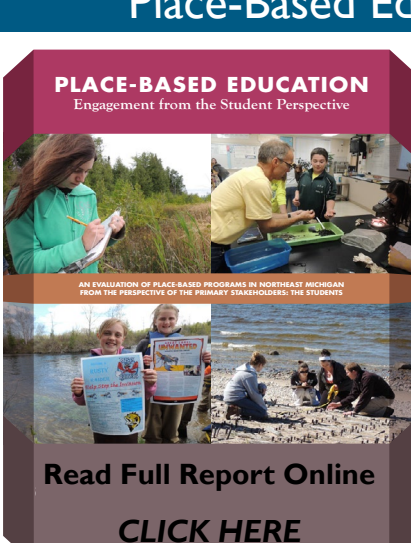


Lake Huron PBE Summer Teacher Institute

August 8th - 11th (Oscoda, Michigan)



Place-Based Education: Engagement from the Student Perspective



By: **Zoe Rae Rote**, Bachelor of Arts student, Hesburgh-Yusko Scholar, University of Notre Dame; **Brandon Schroeder**, Michigan Sea Grant; and **Tracy D'Augustino**, Michigan State University Extension.

A new evaluative report explores the values and opportunities in place-based education, in collaboration with participating Northeast Michigan Great Lakes Stewardship Initiative (NEMIGLSI) schools, teachers and students. This report centers on four case studies illustrating place-based education at its best in northeast Michigan.

In addition, the case studies exhibit place-based education across a range of learning landscapes; from in-school elementary, middle, and high school examples to a summer natural resources science camp. Important in reviewing these case studies is the attention paid to place-based education as a learning process from the students' perspective, as well as the experiences and values of the educators and youth engaged in this learning process. View the complete report online - [Click Here](#)

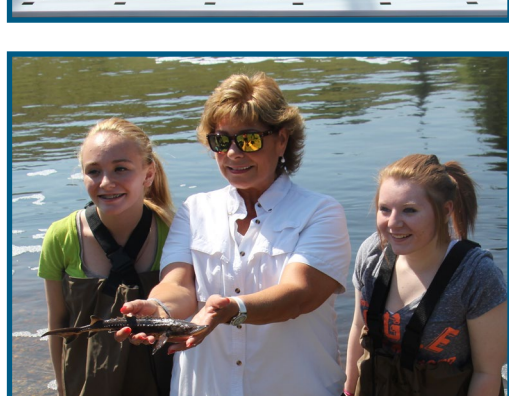
Onaway High School - Green School Certified!



At Onaway High School, Scott Steensma reinvented his classroom curriculum to put students in charge of their learning experience. Students integrate the environment and their local community into the classroom through their service-learning course, and their projects are focused in five areas: animals and habitat; fisheries and water quality; plants and forestry; recycling and energy; and technology and data. These projects allow students to make a difference in their school and community. As a byproduct of all their hard work, Onaway Community Schools is now an Evergreen School. This status is the highest honor a school can receive from the Michigan Green Schools program!

These students are going green to better their school and community. Simultaneously, they improve their local environment. Whether it is promoting alternative energy, recycling, or growing lettuce for their school cafeteria, these projects empower students and give them a sense of personal responsibility. Their work continues to translate into amazing products and experiences allowing the school, community, environment, and students to benefit. Everybody wins!

For more information about how Onaway High School students improve their school, community, and local environment, visit their project page on the NEMIGLSI website - [Click Here!](#)



To remove your name from our mailing list reply with subject heading, "Unsubscribe" Questions or Comments? Contact us at northeastmichiganGLSI@gmail.com

LEADERSHIP FOR THE NORTHEAST MICHIGAN GREAT LAKES STEWARDSHIP INITIATIVE PROVIDED IN PARTNERSHIP BY:



Northeast Michigan Great Lakes Stewardship Initiative network programs and materials are open to all without regard to race, color, national or ethnic origin, gender, gender identity, religion, age, height, weight, disability, political beliefs, sexual orientation, marital status, family status, or veteran status.